

**Thunder Bay**  
988 Alloy Drive  
1-807-623-9561

**Sudbury**  
1130 Lorne Street  
1-705-669-1234

**Thunder Bay (Rentals)**  
1185 Roland Street  
1-807-623-7469

**Sault Ste Marie**  
235 Drive-In Road  
1-705-949-7379



## **Solutions For Norther Communities**

# Storage Solutions

## Shelving



Scan to  
learn more

### Description:

Secure, efficient storage to support day-to-day operations.



### Spider Shelving:

A high-capacity storage solution designed for durability and flexibility. Ideal for community warehouses, public works departments, and government offices, it helps maximize storage for essential supplies, tools, and archived records.



### Sea Can Shelving:

Custom shelving designed offering an easy storage solution for outdoor and mobile applications. Used in public works departments, and disaster response units for storing maintenance tools, seasonal equipment, and emergency supplies.



### Shelving With Drawers:

Combine open shelving with secure drawers for efficient storage and organization of tools, documents, and supplies in communal facilities. These systems maximize space while keeping essential items easily accessible and well-protected.



### Mobile Shelving:

Space-saving shelving that moves along tracks to increase storage density. This is highly beneficial for community offices where maximizing space and easy access to files or equipment are essential.

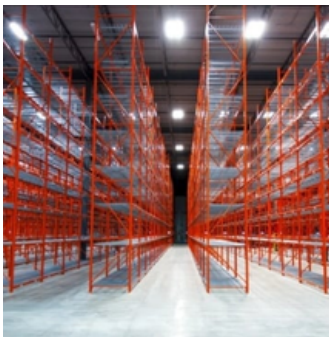
## Racking



Scan to  
learn more

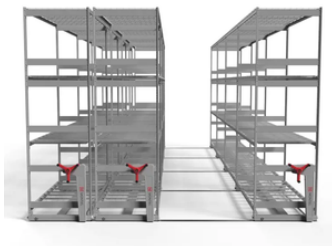
### Description:

Designed to optimize storage and improve safety, racking solutions help municipalities efficiently organize materials while protecting workers and equipment. These systems enhance warehouse, archive, and maintenance facility operations.



### Pallet Racking:

Optimize warehouse and storage space with durable pallet racking systems designed for efficient organization and easy access to bulk materials. Municipalities benefit from improved inventory management, streamlined operations, and safer storage of essential supplies.



### Mobile Racking:

Maximize storage capacity with space-saving mobile racking systems that improve organization and accessibility in communal facilities. These systems enhance efficiency in offices, archives, and public works storage by optimizing available space.



### Safety Netting:

Prevent falling materials and improve workplace safety with durable netting for storage areas.



### Rack Protection:

Extend the life of racking systems with impact-resistant guards that shield against accidental damage.

## Cabinets



Scan to  
learn more

### Description:

Rousseau's extensive range of cabinets offers versatile storage solutions for community, ensuring organized, secure, and efficient equipment management. Whether for tool storage, hazardous material containment, or general organization, these cabinets enhance workplace efficiency across municipal departments, from fleet maintenance to public safety.



### Mobile Drawer Cabinets:

Durable and secure storage with smooth-rolling casters, perfect for efficient workspace organization in community maintenance facilities.



### Stationary Drawer Cabinets:

Fixed storage solutions with high-capacity drawers, ideal for organizing tools and supplies in workshops.



### Stationary Door Cabinets:

Secure storage for larger items, offering flexible organization in garages, offices, and maintenance departments.



### Safety Cabinets:

Fire-rated storage for flammable liquids, ensuring compliance with safety regulations in buildings and service areas.

## Lockers



Scan to  
learn more

### Description:

Essential for communities, providing organized, secure storage for employees, emergency responders, and public facility users across various departments.



### Standard lockers:

Heavy-duty steel lockers designed for communal buildings, ensuring secure storage for staff and public facility users.



### Multi shelf lockers:

Heavy-duty steel lockers with multiple shelves designed for communal buildings, ensuring secure storage for staff and public facility users.



### Locker Trays:

Durable replacement bottoms that extend locker life, reducing maintenance costs in facilities.

## Bins & Containers



Scan to  
learn more

**Description:**

Durable, weather-resistant storage solutions for waste, tools, and materials, designed for secure and long-lasting use in various environments.



**SOS Bins:**

Durable, all-weather storage bins perfect for communities to securely store sand, salt, tools, and safety equipment.



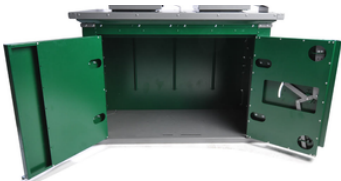
**Safety Cans and Containers:**

Leakproof, fire-resistant cans designed to safely store and dispense hazardous liquids, minimizing fire risks in workplaces.



**Outdoor Ashtrays:**

Fire-safe, weather-resistant cigarette butt receptacles that help communities maintain cleaner, litter-free public spaces.



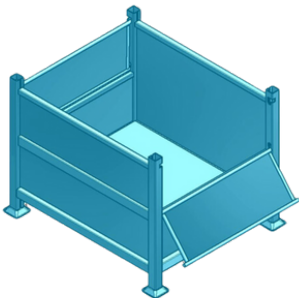
**Commercial Waste Receptacles:**

Animal-resistant garbage bins designed for parks, community centers, and public areas, keeping waste secure and wildlife out.



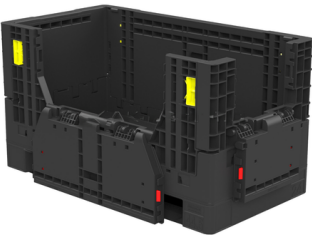
**Recycling and Waste Containers:**

Designed for efficient waste management in communities, these durable, multi-compartment stations promote source separation, reduce landfill waste, and enhance public recycling efforts with secure, long-lasting construction.



**Steel bulk containers:**

Ideal for communal use, these heavy-duty, stackable containers streamline waste management, recycling, and material handling with durable construction, secure storage, and easy forklift access.



**Plastic Bulk Containers (Fixed & Collapsible):**

Designed for durability and space efficiency, these containers securely store and transport communal materials, recyclables, and waste. Collapsible options save space when not in use, helping municipalities optimize storage and logistics operations.



## Structures & Enclosures



Scan to  
learn more

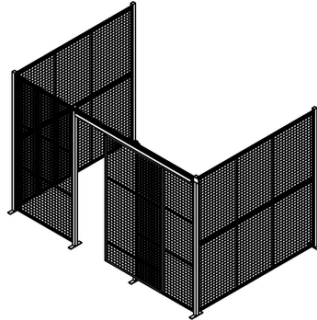
### Description:

Reliable, customizable solutions for Northern communities, offering durable, weather-resistant shelters, partitions, and storage options to enhance functionality and safety in public spaces, facilities, and outdoor areas. From fabric shelters to secure enclosures, these products help optimize space, improve accessibility, and withstand the elements.



### Fabric Shelters:

Weather-resistant, versatile structures ideal for Northern communities to provide temporary storage or shelter in parks, public works, and emergency scenarios.



### Warehouse Fence Systems:

Secure and organize communal storage areas with durable warehouse fence systems that provide safety, access control, and asset protection. These systems help safeguard equipment, restrict unauthorized access, and improve facility organization.



### Mezzanines:

Space-saving platforms that help maximize vertical space in storage or administrative areas, improving efficiency in public facilities.



### Washroom Partitions:

Durable, easy-to-maintain dividers for washrooms, enhancing privacy and cleanliness in high-traffic public spaces.



### Mobile Partitions:

Flexible, movable dividers that allow easy reconfigure of public spaces for events, meetings, or additional services.



### Benches:

Sturdy, weather-resistant seating options for public spaces, providing comfortable rest areas in parks, streets, and municipal buildings.



### Bike Racks:

Secure and accessible bike storage solutions, promoting sustainable transportation options in parks, recreation centers, and public areas.



### Acrovyn Doors:

High-impact, maintenance-free doors designed to withstand heavy use in communal buildings, reducing repair costs and improving safety.



## Sweepers and vacuum sweepers



Scan to  
learn more

### Description:

Sweepers and vacuum sweepers provide efficient dust-free cleaning for communal spaces, ensuring streets, parks, and public buildings remain well-maintained. Whether for small courtyards or large outdoor areas, these machines help Northern communities keep their environments clean with minimal effort and maximum efficiency.



### Walk-Behind Sweepers:

Ideal for courtyards, sidewalks, and workshops, offering ergonomic and dust-free sweeping for areas from 300 m<sup>2</sup> and up.



### Walk-Behind Sweepers: (Battery Operated)

Ideal for courtyards, sidewalks, and workshops, offering ergonomic and dust-free sweeping for areas from 300 m<sup>2</sup> and up.



### Walk behind vacuum Sweepers: (Battery Operated)

Best for large spaces like arenas, public markets, and parking garages, ensuring maximum efficiency with up to 4725 m<sup>2</sup> per hour of cleaning power.

## Floor Scrubbers



Scan to  
learn more

### Description:

Communal facilities require efficient and reliable cleaning solutions to maintain hygiene in public spaces. Floor scrubbers offer a powerful and time-saving way to clean various surfaces, from small offices to large public areas. Whether it's compact scrubbers for sidewalks, walk-behind units for community centers, ride-on scrubbers for arenas, or step-on models for busy community buildings, these machines ensure thorough cleaning with minimal effort. Designed for durability and efficiency, they help community maintain clean, safe, and welcoming environments.



### Compact Floor Scrubbers:

Perfect for maintaining cleanliness in communal buildings and small public spaces, scrubbing up to 1,400 m<sup>2</sup> per hour efficiently.



### Walk-Behind Scrubbers:

Versatile and ideal for cleaning medium to large facilities, including community centers and transit stations, covering up to 2,600 m<sup>2</sup> per hour.



### Step-On Scrubber Driers:

A great balance of speed and maneuverability, ideal for city halls, libraries, and high-traffic communal areas, cleaning up to 2,600 m<sup>2</sup> per hour.

## Pressure washers



Scan to  
learn more

### Description:

Pressure washers provide a powerful solution for maintaining cleanliness in municipal spaces, effectively removing dirt, grime, and debris from streets, vehicles, and buildings. Whether for daily cleaning or deep sanitation, these machines offer efficiency and reliability for city maintenance teams.



### Cold Water High-Pressure Cleaners:

Perfect for cleaning vehicles, sidewalks, and large surfaces, using high pressure to remove stubborn dirt.

### Hot Water High-Pressure Cleaners:

Ideal for deep cleaning and sanitization in public areas, using heat for enhanced dirt and grease removal.

### Pressure Washer Trailers:

Mobile and self-contained, these rugged units are perfect for on-site cleaning, especially in remote or large outdoor areas.

## Vacuums



Scan to  
learn more

### Description:

Vacuums are essential for maintaining cleanliness in municipal spaces, efficiently handling dust, debris, and liquid spills. From offices to public buildings and outdoor maintenance, these machines provide powerful and reliable cleaning solutions.



### Upright brush-type vacuum cleaner:

A commercial, single motor upright vacuum cleaner with innovative, patented centrifugal clutch, 300 mm working width, stretch hose and telescopic tube to clean, comb and refresh the textile floors/ piles.



### Dry Vacuum Cleaners:

Ideal for municipal offices, hotels, and retail spaces, offering quiet, high-performance cleaning with sustainable design.



### Wet and Dry Vacuum Cleaners:

Versatile for communal cleaning, effortlessly removing dry, wet, and liquid dirt in various public spaces.



### Stand-On Vacuums:

Innovative and efficient, perfect for large communal areas, providing enhanced productivity and ease of use.

## Wall Protection



Scan to  
learn more

### Description:

Acrovyn® is the legendary leader in wall protection. The complete line includes corner guards, handrails, crash rails, and wall & door protection products in a variety of materials.



### Wall Covering & Panels:

Our durable wall coverings and panels can be used in a variety of spaces to ensure functionality, protection, and pleasing decor.



### Corner Guards

Acrovyn Corner Guards are a simple solution to protect these areas and are available in designs and material options to suit every interior need.



### Wall Guards & Hand Rails:

With models ranging from sleek and simple to robust and impact-resistant, Acrovyn Crash Rails and Handrails can aid in any facility's desire to ease movement.



### Door & Frame Protection:

Commercial and institutional doors are constantly damaged by moving equipment. Acrovyn Door Protection keeps them looking new.



## Building Components & Safety

### Description:

Designed to enhance municipal facilities, these products improve safety, efficiency, and accessibility. From entryways to workspaces, they help municipalities maintain secure, organized, and functional environments.



Scan to  
learn more



Scan to  
learn more



Scan to  
learn more



Scan to  
learn more



### High-Speed Doors:

Optimize efficiency and temperature control with rapid-closing doors for garages and municipal facilities.



### Air Curtains:

Improve indoor air quality and energy efficiency by reducing drafts and preventing contaminants from entering.



### Chain Hoists & Cranes (Workstation & Jib):

Enhance municipal material handling with our lifting solutions which are designed for safe and efficient lifting.



### Dock Products (Levelers, Bumpers, Seals, Canopies):

Improve loading dock safety and efficiency with levelers, protective bumpers, and weather-sealing solutions.



Scan to  
learn more



Scan to  
learn more

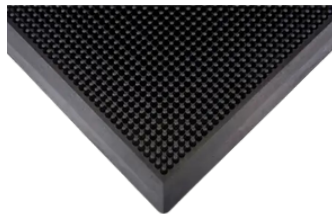


Scan to  
learn more



### Anti-Fatigue Matting & Flooring:

Reduce strain and enhance comfort in high-traffic work areas with ergonomic matting and flooring.



### Entrance Matting:

Improve cleanliness and safety by trapping dirt and moisture at facility entrances.



### Signage, Tapes & Tags:

Clearly mark hazards, directions, and important areas with durable signage and labeling solutions.

## Equipment

### Description:

Built for challenging environments, our equipment helps keep communities running year-round.



Explore our  
inventory



### Hand Trucks:

Lightweight, rugged mobility for all load types



### Pallet Jacks (Manual & Electric):

Durable options for smooth material movement



### Order Pickers:

Improve efficiency in communal storage facility with order pickers designed for safe, elevated access to stored items.



### Forklifts (Pneumatic & Cushion) (LP & Electric):

Versatile forklifts handle heavy lifting in community yards, warehouses, and maintenance facilities.



### Skid Steer Loaders & Track Loaders:

Compact and powerful, these loaders assist in community landscaping, snow removal, and site work.



### Telehandlers:

Extend reach and lift capacity for community construction and maintenance projects with versatile telehandlers.



### Mobile Column Lifts:

Safely lift vehicles for repairs and maintenance with heavy-duty mobile column lifts.



### Scissor Lifts & Aerial Lifts:

Safely access elevated work areas for community repairs, maintenance, and installations.



### Generators:

Ensure backup power for community buildings and emergency response with reliable generators.



### Compressors:

Power tools and equipment with high-performance air compressors.

## Attachments

### Description:

Adapt your machines for seasonal and site-specific needs.



Scan to  
learn more



### Buckets & Material Buckets:

For earthmoving, cleanup, or hauling



### Snow Pusher:

Built to clear large areas quickly and safe



### Angle Broom:

Great for debris and surface cleaning



### Brush Cutter:

Maintain green spaces by cutting thick grass, brush, and overgrowth with ease.



### Snow Blower:

Efficiently clear snow ensuring safety and accessibility during winter months.