



Stationary Drawer Cabinets

R Heavy-Duty Stationary Cabinets are engineered for intensive use, offering unmatched durability and versatility. Available in 7 widths, 15 work surface sizes, and 7 heights, these cabinets provide endless configuration options with 10 different drawer heights to meet your specific needs.

Independently tested, Rousseau's R cabinets are proven to be the most durable on the market, and our drawer rolling system comes with a lifetime warranty, reflecting our confidence in its quality. With a timeless design and robust aesthetics, Rousseau cabinets are built to withstand the toughest tasks while maintaining their stylish appeal.



Benefits

Secure storage: Stationary drawer cabinets can be locked, providing secure storage for valuable or sensitive items.

Space-saving: Stationary drawer cabinets can be stacked, allowing for efficient use of vertical space and maximizing storage capacity in a smaller footprint.

Industries that use stationary drawer cabinets:

Manufacturing: Stationary drawer cabinets can be used in manufacturing facilities to store equipment, tools, and parts.

Government: Stationary drawer cabinets are also used in government facilities, such as police departments, to store weapons and other sensitive items.

Rousseau Advantage



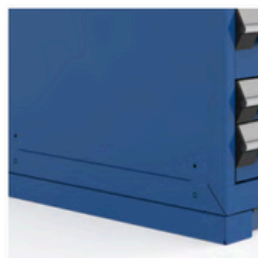
A robust and distinctive design that is ideal for all environments.



10 drawer heights and 7 door heights available.



True North American dimensions allow for perfect modularity.



The housings have predefined fixing zones for installation of add-ons such as work surfaces, shelves, etc.



Industry-leading 400lb. load capacity per drawer.